

## Beta-Actin

### Epitope Specific Rabbit Antibody

Cat. #RB-9421-P0, -P1, or -P (0.1ml, 0.5ml, or 1.0ml at 200µg/ml) (Purified Ab with BSA and Azide)

Cat. #RB-9421-R7 (7.0ml) (Ready-to-Use for Immunohistochemical Staining)

**Description:** The two major cytoskeletal proteins implicated in cell motility are actin and myosin. There are three  $\alpha$ -actin (skeletal, cardiac, and smooth muscle), one  $\beta$ -actin ( $\beta$ -nonmuscle), and two  $\gamma$ -actins ( $\gamma$ -smooth muscle and  $\gamma$ -nonmuscle). Antibody to  $\beta$ -actin provides a specific and useful tool in studying the intracellular distribution of  $\beta$ -actin and the static and dynamic aspects of the cytoskeleton.

**Mol. Wt. Of Antigen:** 42 kDa

**Epitope:** N-terminus

**Species Reactivity:** Human, Mouse, Rat, Bbovine, Sheep, Pig, Rabbit, Cat, Dog, Guinea pig, Chicken, Hirudo medicinalis (leech), and Drosophila.

**Immunogen:** Synthetic peptide corresponding to N-terminus of human beta actin.

### Applications and Suggested Dilutions:

- Western Blotting (2-4µg/ml for 2hrs at RT)
- Immunohistochemistry (formalin/paraffin)

(Ab at 1:50 to 1:100 for 30 min with LV's Ultra Vision)

\* [Staining of formalin-fixed tissues requires boiling tissue sections in 10mM citrate buffer, pH 6.0 for 10-20 min followed by cooling at RT for 20 min.]

The optimal dilution for a specific application should be determined by the investigator.

**Positive Control:** Human leiomyoma

**Cellular Localization:** Cytoplasmic and cell membrane

### Supplied As:

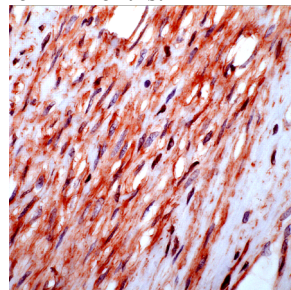
Affinity purified antibody fraction from rabbit anti-serum. Prepared in 10mM PBS, pH 7.6, with 0.2% BSA and 15mM sodium azide.

OR

Prediluted antibody which is ready-to-use for immunohistochemical staining.

### Storage and Stability:

Store vial at 4°C. When stored at 2-8°C, this antibody is stable for 24 months.



Leiomyoma Stained with anti-Beta Actin (cat. # 9421)

### Limitations and Warranty:

Our products are intended FOR RESEARCH USE ONLY and are not approved for clinical diagnosis, drug use or therapeutic procedures. No products are to be construed as a recommendation for use in violation of any patents. We make no representations, warranties or assurances as to the accuracy or completeness of information provided on our data sheets and website. Our warranty is limited to the actual price paid for the product. NeoMarkers is not liable for any property damage, personal injury, time or effort or economic loss caused by our products.

### Material Safety Data:

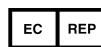
This product is not licensed or approved for administration to humans or to animals other than the experimental animals. Standard Laboratory Practices should be followed when handling this material. The chemical, physical, and toxicological properties of this material have not been thoroughly investigated. Appropriate measures should be taken to avoid skin and eye contact, inhalation, and ingestion. The material contains 0.09% sodium azide as a preservative. Although the quantity of azide is very small, appropriate care should be taken when handling this material as indicated above. The National Institute of Occupational Safety and Health has issued a bulletin citing the potential explosion hazard due to the reaction of sodium azide with copper, lead, brass, or solder in the plumbing systems. Sodium azide forms hydrazoic acid in acidic conditions and should be discarded in a large volume of running water to avoid deposits forming in metal drainage pipes.

**For Research Use Only**

Thermo Fisher Scientific  
Anatomical Pathology  
47777 Warm Springs Blvd.  
Fremont, CA 94539, USA  
Tel: 1-510-991-2800  
Fax: 1-510-991-2826  
<http://www.thermo.com/labvision>



Manufactured by:  
NeoMarkers  
For  
Lab Vision Corporation



Thermo Fisher Scientific  
Anatomical Pathology  
93-96 Chadwick Road, Astmoor  
Runcorn, Cheshire WA7 1PR, UK  
Tel: 44-1928-562600  
Fax: 44-1928-562627  
[Labvision.uk@thermofisher.com](mailto:Labvision.uk@thermofisher.com)