

BCL-6 clone GI191E/A8

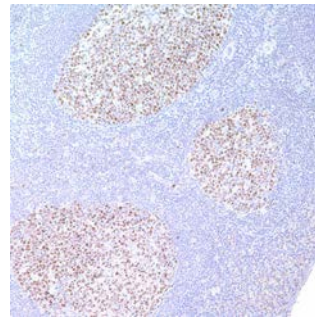
Instructions For Use

Specification:

Bcl-6 is a transcriptional regulator gene which codes for a 706-amino-acid nuclear zinc finger protein. Antibodies to this protein stain the germinal center cells in lymphoid follicles, the follicular cells and interfollicular cells in Follicular Lymphoma, Diffuse Large B-Cell Lymphomas, and Burkitt's lymphoma, and the majority of the Reed-Sternberg cells in Nodular Lymphocyte Predominant Hodgkin's Disease. In contrast, anti-BCL6 rarely stains Mantle Cell Lymphoma and MALT Lymphoma. BCL6 expression is seen in approximately 45% of CD30+ Anaplastic Large Cell Lymphomas but is consistently absent in other peripheral T-cell lymphomas.

Availability:

Catalog No.	Contents	Volume
ILM 7983 C1	BCL-6	1,0 ml
ILM 7983 C05	BCL-6	0,5 ml
ILM 7983 C01	BCL-6	0,1 ml



Intended use: For In Vitro Diagnostic Use (IVD)

Reactivity: Human and mouse

Clone: GI191E/A8

Species of origin: Mouse

Isotype: IgG1

Control Tissue: Lymph node, Tonsil

Staining: Nuclear

Immunogen: Recombinant BCL-6 protein

Presentation: Bioreactor Concentrate with 0.05% Azide

Application and suggested dilutions:

Pretreatment: Heat induced epitope retrieval in 10 mM citrate buffer, pH6.0, for 20 minutes is required for IHC staining on formalin-fixed, paraffin embedded tissue sections.

- Immunohistochemical staining of cryostat tissue sections (dilution 1:200 to 1:400)
- Immunohistochemical staining of formalin-fixed, paraffin embedded tissue section (dilution 1:200 to 1:400)

The optimal dilution for a specific application should be determined by the investigator.

Note: Dilute the antibody in 10% normal goat serum followed by a goat anti-mouse secondary antibody based detection is recommended

Storage & Stability: Store at 2-8 °C. Do not use after expiration date printed on the vial.

References

- 1) José-Francisco Garcia et al. J. Histochem Cytochem. 54:31, 2006
- 2) A Dogan, E Badgi, et al. Am J Surg Pathol 24(6):846-852, 2000
- 3) A. L. Shaffer et al. Immunity. Vol. 13, 199-212, Aug. 2000
- 4) M. D. Kraus, J. Haley. AM J Surg Pathol 24(8):1068-78, 2000
- 5) Ree, H.J. et al, Hum. Pathol. 34:610-616, 2003