

## Actin, Smooth Muscle clone 1A4

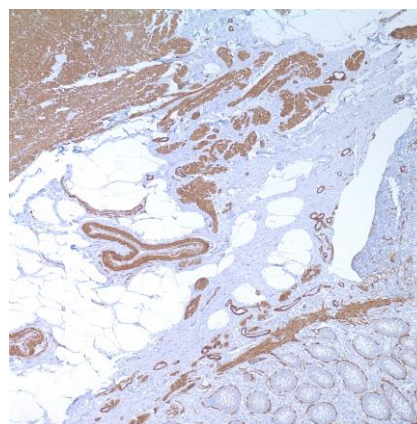
### Instructions For Use

#### Specification:

Actin is a major component of the cytoskeleton and is present in every cell type. Actin can be resolved on the basis of its isoelectric points into three distinctive components: alpha, beta, and gamma in order of increasing isoelectric point. Anti-Smooth Muscle Actin antibody does not stain cardiac or skeletal muscle; however, it will stain myofibroblasts and myoepithelial cells. This antibody could be used together with Muscle Specific Actin to distinguish leiomyosarcoma from rhabdomyosarcoma. In most cases of rhabdomyosarcoma, this antibody gives negative results whereas Muscle Specific Actin is positive in the rhabdomyoblasts. Leiomyosarcomas are positive with both Muscle Specific Actin and Smooth Muscle Actin antibodies.1-5

#### Availability:

| Catalog No.   | Contents | Volume             |
|---------------|----------|--------------------|
| ILM 20211 C1  | Actin    | 1,0 ml concentrate |
| ILM 20211 C05 | Actin    | 0,5 ml concentrate |
| ILM 20211 C01 | Actin    | 0,1 ml concentrate |
| ILM 20211 R25 | Actin    | 25 ml prediluted   |
| ILM 20211 R10 | Actin    | 10 ml prediluted   |



**Intended use:** For In Vitro Diagnostic Use (IVD)

**Reactivity:** Human, Baboon, Monkey, Cow, Pig, Sheep, Goat, Cat, Dog, Rabbit, Mouse, Rat, Guinea pig, Chicken

**Clone:** 1A4

**Species of origin:** Mouse

**Isotype:** IgG<sub>2a</sub>/K

**Control Tissue:** Appendix, uterus, vessel wall

**Staining:** Cytoplasmic

**Presentation:** Bioreactor Concentrate with 0.05% Azide.

#### Application and suggested dilutions:

Pre-treatment: Heat induced epitope retrieval in 10 mM citrate buffer, pH6.0, or in 50 mM Tris buffer pH9.5, for 20 minutes is required for IHC staining on formalin-fixed, paraffin embedded tissue sections.

- Immunohistochemical staining of cryostat tissue sections (dilution up to 1:800-1:1600)
- Immunohistochemical staining of formalin-fixed, paraffin embedded tissue section (dilution up to 1:800-1:1600)

The optimal dilution for a specific application should be determined by the investigator.

- Ready-to-use: Apply the prediluted antibody and incubate for 30-60 minutes at room temperature.

**Note:** Dilution of the antibody in 10% normal goat serum followed by a goat anti-mouse secondary antibody based detection is recommended

**Storage & Stability:** Store at 2-8 °C. Do not use after expiration date printed on the vial.

#### References:

- 1) Cooke, PH., J Cell Biol. 1976; 68-539-556
- 2) Skalli, O., et al., J Cell Biol. 1986; 103:2787-2796
- 3) Gown, AM. et al., J Cell Biol. 1985; 100:807-813
- 4) Kuroda, M., Biochem Biophys Acta 1985; 843:20-213
- 5) Lazarides, E., J Histochem Cytochem 1975; 223:507-528