

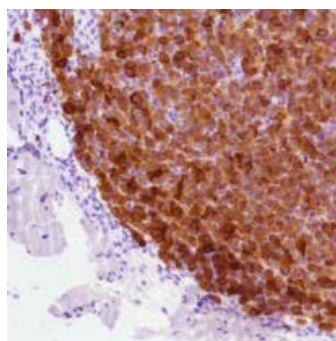
ALK/p80 clone SP8

Specification:

This antibody recognizes a human p80 protein, identified as a hybrid of the anaplastic lymphoma kinase (ALK) gene and the nucleophosmin (NPM) gene resulting from the t(2;5)(p23;q35) translocation found in a third of large cell lymphomas. This antibody can be used to detect p80 in these lymphomas and may also be used to detect a subtype of large B cell lymphoma, which expresses the full-length ALK protein.

Availability:

Catalog No.	Contents	Volume
ILM 3143 C1	ALK/p80	1,0 ml
ILM 3143 C05	ALK/p80	0,5 ml
ILM 3143 C01	ALK/p80	0,1 ml



Intended use: For research use only

Reactivity: Human

Clone: SP8

Species of origin: Rabbit

Isotype: IgG

Controle Tissue: Anaplastic lymphoma

Staining: Cytoplasmic and nuclear

Immunogen: Recombinant protein corresponding to a region which spans the tyrosine kinase catalytic domain and part of the C-terminus of the NPM-ALK transcript.

Presentation: Rabbit monoclonal antibody supplied as tissue culture supernatant in TBS/1% BSA buffer pH 7.5 with less than 0.1% sodium azide.

Application and suggested dilutions:

Pretreatment: Heat induced epitope retrieval in 10 mM citrate buffer , pH6.0 for 20 minutes is required for IHC staining on formalin-fixed, paraffin embedded tissue sections.

- Immunohistochemical staining of formaline-fixed, paraffin embedded tissue section (dilution 1:100)

The optimal dilution for a specific application should be determined by the investigator.

Note: Dilution of the antibody in 10% normal goat serum followed by a goat anti-rabbit secondary antibody based detection is recommended

Storage & Stability: Store at 2-8 °C. Do not use after expiration date printed on the vial.